

# logic

## All Inclusive Collection

	Connection	Crystal Ball	Fortune	Hype
<b>Fabric Specifications</b>				
<b>Content</b>	85% Polyester, 15% Cotton	41% Cotton, 33% Polyester, 26% Rayon	53% Polyester, 33% Rayon, 14% Acrylic	40% Acrylic, 36% Polyester, 24% Rayon
<b>Repeat</b>	N/A	H - 3.5" V - 7.125"	H - 3.5" V - 3.37"	H - 4.75" V - 5.25"
<b>Weight</b>	8.8 oz/lin yd	16.47 oz/lin yd	11.08 oz/lin yd	15.44 oz/lin yd
<b>Ends/Picks</b>	80/50 per inch	144/68 per inch	144/46 per inch	142/64 per inch
<b>Direction</b>	Up the Roll	Up The Roll	Shown Railroaded	Up The Roll
<b>Finish/Backing</b>	Crypton®	Crypton®	Crypton®	Crypton®
<b>Cleaning Code</b>	S	W	W	S
<b>Width</b>	54"	54"	54"	54"
<b>Origin</b>	USA	USA	USA	USA

<b>Performance Characteristics</b>				
<b>Abrasion Resistance</b> ASTM D4157	50,000 Double Rubs	50,000 Double Rubs	50,000 Double Rubs	50,000 Double Rubs
<b>Tensile Strength</b> ASTM D5034	Warp: 320.0 lbs Fill: 197.0 lbs	Warp: 502.1 lbs Fill: 426.1 lbs	Warp: 499.9 lbs Fill: 269.8 lbs	Warp: 504.1 lbs Fill: 503.4 lbs
<b>Tear Strength</b> ASTM D2261/2	Warp: 33.0 lbs Fill: 29.0 lbs	Warp: 41.0 lbs Fill: 36.1 lbs	Warp: 41.0 lbs Fill: 36.1 lbs	Warp: 28.3 lbs Fill: 24.9 lbs
<b>Seam Slippage</b> ASTM D4034	Warp: 60.0 lbs Fill: 43.0 lbs	Warp: 69.3 lbs Fill: 58.7 lbs	Warp: 81.5 lbs Fill: 60.4 lbs	Warp: 76.3 lbs Fill: 62.4 lbs
<b>Brush Pill</b> ASTM D3511	Class 4	Class 3	Class 3	Class 3
<b>Colorfastness to Light</b> AATCC 16	40 hrs. Class 4	40 hrs. Class 4	40 hrs. Class 4	40 hrs. Class 4
<b>Colorfastness to Crocking</b> AATCC 8	4.0 Dry, 3.0 Wet	4.0 Dry, 3.0 Wet	4.0 Dry, 3.0 Wet	4.0 Dry, 3.0 Wet

<b>Flammability</b>				
<b>Cal. Technical Bulletin 117-E</b> Sec. E (CS-191-53)	Passes	Passes	Passes	Passes
<b>NFPA 260</b>	Class I	Class I	Class I	Class I
<b>UFAC</b>	Class I	Class I	Class I	Class I

<b>Recommended Cleaning Care</b>	
<b>W</b>	Water-based cleaning agents and foam may be used for cleaning. Cleaning by a professional cleaning service is recommended.
<b>S</b>	Clean this fabric with pure solvents (petroleum distillate-based products, Energie, Carbona, Renuzit, or similar products may be used), in a well-ventilated room. Cleaning by a professional furniture cleaning service only is recommended. CAUTION: Use of water-based or detergent based solvent cleaners may cause excessive shrinking. Water stains may become permanent and unable to be removed with solvent cleaning agents. Avoid products containing Carbon Tetrachloride as it is highly toxic. To prevent overall soil, frequent vacuuming or light brushing to remove dust and grime is recommended.

Variations in color and texture are inherent to these textiles. Application testing of this product is recommended.

### Additional Properties and Test Results

#### Stain Resistance

Type of Stain	After 5 Minutes	After 24 Hours
Blood	Class 5	Class 5
Urine	Class 5	Class 5
Betadine	Class 5	Class 4.5
Coffee	Class 5	Class 5
Suntan Lotion	Class 3.5	Class 3.5
Catsup	Class 5	Class 5
Grape Drink	Class 5	Class 5

#### Bacterial Resistance

Source: Intertek Testing  
Excellent anti-bacterial properties as evidenced by 4 and 5 millimeter-wide growth-free zones produced against Staphylococcus Aureus test organism.

#### Moisture Resistance

Suter Test: 100 Average cm.\*  
\*Due to its sculptured texture, individual Suter test results can vary across the fabric with no significant adverse effect on its water resistance.



CRYPTON®  
Super Fabrics



US Patents: 6,541,138, 6,492,001, 6,251,210, 6,207,250, 6,165,920, 6,024,823, 5,747,392, 5,545,265. Other US and international patents pending. Crypton and the red planet logo are registered trademarks of Crypton, Inc.

Class 3: Satisfactory Removal - Class 4: Good Removal - Class 5: Excellent Removal - Source: American Society of Cleaning and Restoration.

	Karma	Passage	Pathway	Square Dance	Vibe
<b>Fabric Specifications</b>					
<b>Content</b>	77% Recycled Polyester, 23% Cotton	66% Polyester, 34% Cotton	75% Polyester, 25% Cotton	51% Polyester, 49% Rayon	48% Polyester, 30% Rayon, 22% Cotton
<b>Repeat</b>	H - 2.3" V - 3.4"	N/A	H - 14.5" V - 7.25"	H - 4.5" V - 1.75"	N/A
<b>Weight</b>	13.8 oz/lin yd	10.9 oz/lin yd	11.1 oz/lin yd	13.67 oz/lin yd	11.62 oz/lin yd
<b>Ends/Picks</b>	142/48 per inch	80/26 per inch	180/58 per inch	142/46 per inch	142/44 per inch
<b>Direction</b>	Up The Roll	Up the Roll	Shown Railroaded	Up The Roll	Up The Roll
<b>Finish/Backing</b>	Crypton® Green	Crypton®	Crypton®	Crypton®	Crypton®
<b>Cleaning Code</b>	W	S	S	S	S
<b>Width</b>	54"	54"	54"	54"	54"
<b>Origin</b>	USA	USA	USA	USA	USA

<b>Performance Characteristics</b>					
<b>Abrasion Resistance</b> ASTM D4157	50,000 Double Rubs	50,000 Double Rubs	50,000 Double Rubs	50,000 Double Rubs	50,000 Double Rubs
<b>Tensile Strength</b> ASTM D5034	Warp: 190.1 lbs Fill: 190.3 lbs	Warp: 402.0 lbs Fill: 300.0 lbs	Warp: 436.0 lbs Fill: 323.0 lbs	Warp: 407.3 lbs Fill: 340.8 lbs	Warp: 50.0 lbs Fill: 50.0 lbs
<b>Tear Strength</b> ASTM D2261/2	Warp: 122.0 lbs Fill: 83.8 lbs	Warp: 37.0 lbs Fill: 30.0 lbs	Warp: 37.0 lbs Fill: 30.0 lbs	Warp: 41.2 lbs Fill: 37.4 lbs	Warp: 6.0 lbs Fill: 6.0 lbs
<b>Seam Slippage</b> ASTM D4034	Warp: 56.5 lbs Fill: 67.4 lbs	Warp: 58.0 lbs Fill: 46.0 lbs	Warp: 55.0 lbs Fill: 42.0 lbs	Warp: 69.0 Fill: 47.5	Warp: 59.0 lbs Fill: 45.0 lbs
<b>Brush Pill</b> ASTM D3511	Class 3	Class 4	Class 4	Class 3	Class 3
<b>Colorfastness to Light</b> AATCC 16	40 hrs. Class 4	40 hrs. Class 4	40 hrs. Class 4	40 hrs. Class 4	40 hrs. Class 4
<b>Colorfastness to Crocking</b> AATCC 8	5.0 Dry, 5.0 Wet	4.0 Dry, 3.0 Wet	4.0 Dry, 3.0 Wet	4.0 Dry, 3.0 Wet	4.0 Dry, 3.0 Wet

<b>Flammability</b>					
<b>Cal. Technical Bulletin 117-E</b> Sec. E (CS-191-53)	Passes	Passes	Passes	Passes	Passes
<b>NFPA 260</b>	Class I	Class I	Class I	Class I	Class I
<b>UFAC</b>	Class I	Class I	Class I	Class I	Class I

<b>Recommended Cleaning Care</b>	
<b>W</b>	Water-based cleaning agents and foam may be used for cleaning. Cleaning by a professional cleaning service is recommended.
<b>S</b>	Clean this fabric with pure solvents (petroleum distillate-based products, Energie, Carbona, Renuzit, or similar products may be used), in a well-ventilated room. Cleaning by a professional furniture cleaning service only is recommended. CAUTION: Use of water-based or detergent based solvent cleaners may cause excessive shrinking. Water stains may become permanent and unable to be removed with solvent cleaning agents. Avoid products containing Carbon Tetrachloride as it is highly toxic. To prevent overall soil, frequent vacuuming or light brushing to remove dust and grime is recommended.

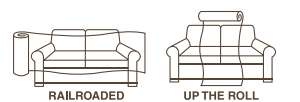
Variations in color and texture are inherent to these textiles. Application testing of this product is recommended.

## All Inclusive Collection

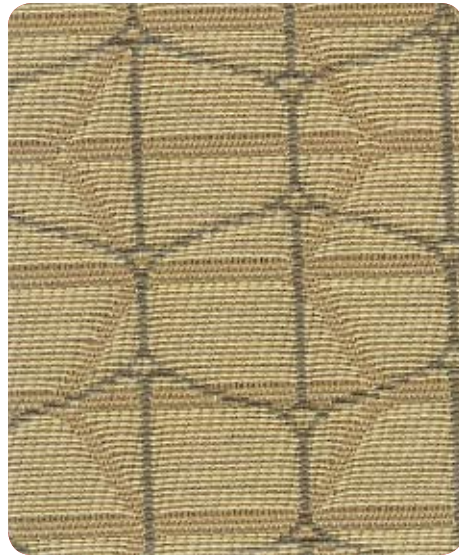
# logic

## Furniture that makes sense.

901 East Madison Street Goshen, IN 46528  
tel 800 975 0007 loaicfurniture.com sales@loaicfurniture.com



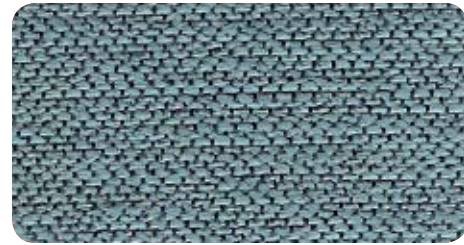
**Memo Sets Are Available -**  
For memo sets, please contact Burch Fabrics Group at: logicmemosamples@burchfabrics.com.



Hype  
1006096 Sand



Connection  
1006323 Taupe



Passage  
1006297 Pond



Hype  
1006099 Mist



Vibe  
1006116 Honey



Square Dance  
1001284 Straw



Karma  
1004873 Fog



Fortune  
1005910 Hazelnut



Connection  
1006322 Caramel



Karma  
1004871 Rouge



Pathway  
1006314 Rust



Passage  
1006299 Scarlet



Crystal Ball  
1005926 Latte



Passage  
1006294 Biscuit



Pathway  
1006311 Brass



Connection  
1006326 Slate



Karma  
1004877 Honeydew



Connection  
1006325 Herb



Pathway  
1006309 Elm



Vibe  
1006117 Cactus



Passage  
1006296 Moss



Fortune  
1005915 Tabasco



Hype  
1006102 Mulberry



Crystal Ball  
1005932 Scarlet



Square Dance  
1001286 Biscuit



Pathway  
1006312 Navy



Karma  
1004875 Puddle



Vibe  
1006118 Marina



Fortune  
1005914 Navy



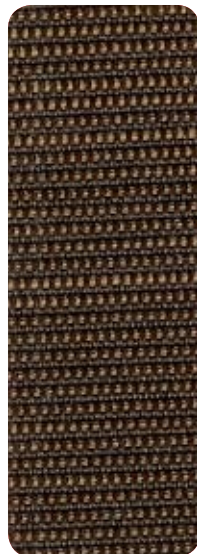
Square Dance  
1001285 Grass



Hype  
1006098 Clover



Fortune  
1005912 Clover



Vibe  
1006121 Toffee



Connection  
1006328 Noir



Vibe  
1006122 Phantom



Fortune  
1005917 Eclipse